

ELEMENTS

Outdoor Essentials for Belgard

OUTDOOR KITCHEN
& FIRE PITS



ELEMENTS PRO 32" BUILT-IN GRILL



FEATURES & BENEFITS

- Commercial Grade Stainless Steel
- Double-Lined Hood
- 8mm Cooking Grates
- Four 14,000 BTU Cast Stainless Steel Burners with Stainless Steel Burner Covers (total 56,000 BTU)
- 15,000 BTU IR Back Burner
- Heat Zone Separators
- External LED Lighting & Interior Cooking Lights
- Flame Thrower Ignition & Manual Flash Tube Ignition
- Custom Fitted, Water-Resistant Cover Available

PACKAGE INFO	UNIT DIMENSIONS W X D X H	PACKAGE DIMENSIONS W X D X H	PACKAGE WEIGHT (LBS)	CUTOUT DIMENSIONS W X H X D
70585054 - Pro 32" Built-In Grill NG	32½ x 25½ x 20	35½ x 27 x 21½	122	30¾ x 8½ x 20¾
70585055 - Pro 32" Built-In Grill LP	32½ x 25½ x 20	35½ x 27 x 21½	122	30¾ x 8½ x 20¾
70585077 - 32" Built-In Grill Cover	32	13 x 2 x 15	2	N/A

ELEMENTS PRO 40" BUILT-IN GRILL



FEATURES & BENEFITS

- Commercial Grade Stainless Steel
- Double-Lined Hood
- 8mm Cooking Grates
- Five 14,000 BTU Cast Stainless Steel Burners with Stainless Steel Burner Covers (total 70,000 BTU)
- 15,000 BTU IR Back Burner
- Heat Zone Separators
- External LED Lighting & Interior Cooking Lights
- Flame Thrower Ignition & Manual Flash Tube Ignition
- Custom Fitted, Water-Resistant Cover Available

PACKAGE INFO	UNIT DIMENSIONS W X D X H	PACKAGE DIMENSIONS W X D X H	PACKAGE WEIGHT (LBS)	CUTOUT DIMENSIONS W X H X D
70585056 - Pro 40" Built-In Grill NG	39¾ x 25½ x 20	43 x 27 x 21½	150	37¾ x 8½ x 20¾
70585057 - Pro 40" Built-In Grill LP	39¾ x 25½ x 20	43 x 27 x 21½	150	37¾ x 8½ x 20¾
70585080 - 38/40" Built-In Grill Cover	40	13 x 2 x 15	2	N/A

ELEMENTS OUTDOOR OVEN



FEATURES & BENEFITS

- Main Burner 16,000 BTU
- Built-In Halogen Cooking Light
- 3 Cooking Racks
- Large Oven Capacity & Food Safe Pizza Stone; Cook up to 16" Pizza
- Electronic Ignition
- Full View Front Window with Temperature Gauge
- Cool Touch Surface & Heat Resistant Handle
- Wood Chip Smoker Box
- CSA Certified
- Custom Fitted, Water-Resistant Cover Available

PACKAGE INFO	UNIT DIMENSIONS W X D X H	PACKAGE DIMENSIONS W X D X H	PACKAGE WEIGHT (LBS)	CUTOUT DIMENSIONS W X H X D
70585089 - Outdoor Oven NG	22¼ x 25½ x 34¼	28½ x 25¾ x 29½	101	23½ x 6¼ x 20
70585090 - Outdoor Oven LP	22¼ x 25½ x 34¼	28½ x 25¾ x 29½	101	23½ x 6¼ x 20
70585091 - Outdoor Oven Cover	N/A	14 x 2 x 16	2	N/A

ELEMENTS BLUE DIAMOND



FEATURES & BENEFITS

- Large 22" Ceramic Kamado Style Smoker with a Unique 1¼" Gemstone Patterned Ceramic Shell
- 18.5" Diameter Cooking Grate Made of #304 Stainless Steel
- Includes: Large 3" Thermometer, Cast Iron Top Vent with Hood, Premium Bamboo Handle, a Fiber Casket, and 3 Ceramic Feet For Built-In Applications
- The Easy Lift, Stainless Steel Hinge Makes Opening the Kamado Easy and Holds the Top Open During Cooking
- Stainless Steel Grill Grate Lifter Included

PACKAGE INFO	UNIT DIMENSIONS W X D X H	PACKAGE DIMENSIONS W X D X H	PACKAGE WEIGHT (LBS)	CUTOUT DIMENSIONS W X H X D
70580612 - Elements Blue Diamond Kamado Smoker	23 x 28 x 32	28 x 33 x 37	170	N/A

ELEMENTS SINGLE SIDE BURNER



FEATURES & BENEFITS

- Total BTUs: 15,000
- Cooking Surface: 9½ x 9½
- Custom Fitted, Water-Resistant Cover Available

PACKAGE INFO

	UNIT DIMENSIONS W X D X H	PACKAGE DIMENSIONS W X D X H	PACKAGE WEIGHT (LBS)	CUTOUT DIMENSIONS W X H X D
70585066 - Single Side Burner NG	14 x 19½ x 5¾	20½ x 15 x 6½	22	8 x 2½ x 15½
70585067 - Single Side Burner LP	14 x 19½ x 5¾	20½ x 15 x 6½	22	8 x 2½ x 15½
70585087 - Single Side Burner Cover	N/A	10 x 2 x 13	1	N/A

ELEMENTS PRO DOUBLE SIDE BURNER



FEATURES & BENEFITS

- Total BTUs: 24,000
- Cooking Surface: 19½ x 10½
- Custom Fitted, Water-Resistant Cover Available
- Pro Edition Includes Front LED Lights

PACKAGE INFO

	UNIT DIMENSIONS W X D X H	PACKAGE DIMENSIONS W X D X H	PACKAGE WEIGHT (LBS)	CUTOUT DIMENSIONS W X H X D
70585045 - Pro Double Side Burner NG	12¾ x 25¾ x 9¾	27 x 14 x 11½	37	10¾ x 8 x 20¾
70585044 - Pro Double Side Burner LP	12¾ x 25¾ x 9¾	27 x 14 x 11½	37	10¾ x 8 x 20¾
70585068 - Double Side Burner NG	12¾ x 25¾ x 9¾	27 x 14 x 11½	37	10¾ x 8 x 20¾
70585069 - Double Side Burner LP	12¾ x 25¾ x 9¾	27 x 14 x 11½	37	10¾ x 8 x 20¾
70585088 - Double Side Burner Cover	N/A	10 x 2 x 13	1	N/A

ELEMENTS DOUBLE ACCESS DOORS



FEATURES & BENEFITS

- #304 Stainless Steel
- Double Lined Construction
- Magnetic Latch for Secure Closure
- Handleless

PACKAGE INFO

	UNIT DIMENSIONS W X D X H	PACKAGE DIMENSIONS W X D X H	PACKAGE WEIGHT (LBS)	CUTOUT DIMENSIONS W X H X D
70585078 - Double Access Doors	33 x 22	35¾ x 4½ x 25½	23	30¾ x 19¾ x N/A

ELEMENTS DOUBLE DRAWERS



FEATURES & BENEFITS

- #304 Stainless Steel
- Soft Close Drawers
- Handleless

PACKAGE INFO

	UNIT DIMENSIONS W X D X H	PACKAGE DIMENSIONS W X D X H	PACKAGE WEIGHT (LBS)	CUTOUT DIMENSIONS W X H X D
70585072 - Double Drawers	17 x 20½ x 22	25 x 20½ x 24	50	15¼ x 19¾ x 20¾

ELEMENTS DELUXE COMPACT REFRIGERATOR



FEATURES & BENEFITS

- #304 Stainless Steel Door Construction
- Storage Capacity: 4.5 ft³
- Left and Right Doors Available
- Rear Venting
- Factory Installed Security Lock
- Adjustable Digital Thermostat
- Temperature Range 32° to 50°

PACKAGE INFO

	UNIT DIMENSIONS W X D X H	PACKAGE DIMENSIONS W X D X H	PACKAGE WEIGHT (LBS)	CUTOUT DIMENSIONS W X H X D
70585064 - Deluxe Compact Fridge L	20 x 18 x 32	N/A	N/A	20½ x 33¼ x 20
70585065 - Deluxe Compact Fridge R	20 x 18 x 32	N/A	N/A	20½ x 33¼ x 20

ELEMENTS 2-BIN TRASH DRAWER



FEATURES & BENEFITS

- Handle free design for a sleek look and to eliminate obstructions
- #304 Stainless Steel Construction
- Heavy Duty Track Roller System
- Stainless Steel Mounting Tabs
- Full Extension Drawer Slides
- Includes 2 Bins

PACKAGE INFO

PACKAGE INFO	UNIT DIMENSIONS W X D X H	PACKAGE DIMENSIONS W X D X H	PACKAGE WEIGHT (LBS)	CUTOUT DIMENSIONS W X H X D
205500015 – Elements 2-Bin Trash Drawer	20 x 23½ x 27	28 x 25 x 30	55	18¼ x 24¾ x 24¾



ELEMENTS OUTDOOR DROP-IN SINK



FEATURES & BENEFITS

- Hot & Cold Faucet
- #304 Stainless Steel Construction
- Double Handle Valve
- Chrome-Plated Faucet
- Stopper/Strainer for Added Versatility

PACKAGE INFO

PACKAGE INFO	UNIT DIMENSIONS W X D X H	PACKAGE DIMENSIONS W X D X H	PACKAGE WEIGHT (LBS)	CUTOUT DIMENSIONS W X H X D
70585094 – Outdoor Drop-In Sink	15 x 15 x 16	18 x 18 x 10	8	14¼ x 14¼ x 16½

ELEMENTS BEVERAGE & PREP STATION



FEATURES & BENEFITS

- LED Lights
- Sink
- Ice Storage
- 3 Condiment Trays
- Speed Rail
- Towel Holder
- Bottle Opener
- #304 Stainless Steel Construction

PACKAGE INFO

PACKAGE INFO	UNIT DIMENSIONS W X D X H	PACKAGE DIMENSIONS W X D X H	PACKAGE WEIGHT (LBS)	CUTOUT DIMENSIONS W X H X D
70585073 – Beverage & Prep Station	29¾ x 26⅞ x 11⅞	32½ x 30 x 13	72	28 x 10⅞ x N/A

ELEMENTS FARMHOUSE SINK



FEATURES & BENEFITS

- Fashionable Apron Front That Matches Face Style of Elements Pro Grill
- Large and Deep Basin to Fit Any Size Pot or Pan
- Constructed Completely Out of Stainless Steel
- 13" Tall Sleek Metal Faucet
- #304 Stainless Steel Construction

PACKAGE INFO

PACKAGE INFO	UNIT DIMENSIONS W X D X H	PACKAGE DIMENSIONS W X D X H	PACKAGE WEIGHT (LBS)	CUTOUT DIMENSIONS W X H X D
70584359 – Farmhouse Sink	32¾ x 25¾ x 8	35 x 28 x 14	40	31¾ x 8½ x 21½

ELEMENTS ROTISSERIE KIT

FEATURES & BENEFITS

- Bag Keeps Rotisserie Kit Organized & Protected
- Weather Protected Stainless Steel Motor
- Fork Set
- Counterbalance
- Spit Rod

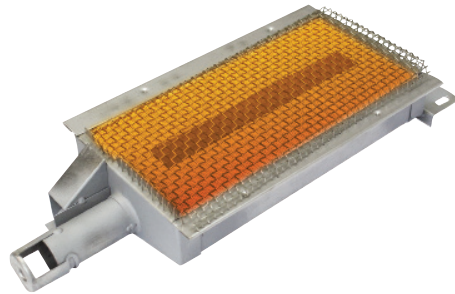


PACKAGE INFO	UNIT DIMENSIONS W X D X H	PACKAGE DIMENSIONS W X D X H	PACKAGE WEIGHT (LBS)	CUTOUT DIMENSIONS W X H X D
70585076 - 32" Rotisserie Kit Bag	32	11 x 1 x 15	1	N/A
70585083 - 40" Rotisserie Kit Bag	44	11 x 1 x 15	1	N/A
70585075 - 32" Rotisserie Kit	32	35½ x 6½ x 4½	6	N/A
70585082 - 40" Rotisserie Kit	40	42¾ x 6½ x 4½	7	N/A

ELEMENTS INFRARED SEAR BURNER

FEATURES & BENEFITS

- Can Replace Nearly Any Burner Position
- Gives a Customizable Cooking Experience



PACKAGE INFO	UNIT DIMENSIONS W X D X H	PACKAGE DIMENSIONS W X D X H	PACKAGE WEIGHT (LBS)	CUTOUT DIMENSIONS W X H X D
70585085 - Infrared Sear Burner	-	17 x 6 x 6	4	N/A

ELEMENTS STAINLESS STEEL SMOKER TRAY

FEATURES & BENEFITS

- Meal Enhancer Allows for Endless Flavor Options

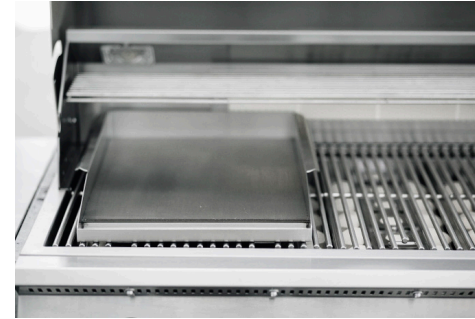


PACKAGE INFO	UNIT DIMENSIONS W X D X H	PACKAGE DIMENSIONS W X D X H	PACKAGE WEIGHT (LBS)	CUTOUT DIMENSIONS W X H X D
70585086 - Stainless Steel Smoker Tray	N/A	20½ x 5¼ x 2	3	N/A

ELEMENTS GRIDDLE PLATE

FEATURES & BENEFITS

- #304 Stainless Steel
- 212 Square Inch of Grilling Space



PACKAGE INFO	UNIT DIMENSIONS W X D X H	PACKAGE DIMENSIONS W X D X H	PACKAGE WEIGHT (LBS)	CUTOUT DIMENSIONS W X H X D
70585070 - Griddle Plate	14 x 17½	17½ x 3½ x 22½	14	N/A

ELEMENTS 8PC PIZZA OVEN ACCESSORY KIT

KIT INCLUDES:

- Leather Glove
- Steel Smoker Box
- Stainless Steel Serving Spatula
- 15" x 14" Pizza Stone
- Stainless Steel Cutter/Spatula
- 9" Stainless Steel Wheel Cutter
- Foldable Pizza Paddle
- Stainless Steel Grill Rack



PACKAGE INFO	UNIT DIMENSIONS W X D X H	PACKAGE DIMENSIONS W X D X H	PACKAGE WEIGHT (LBS)	CUTOUT DIMENSIONS W X H X D
70585093 - Pizza Oven Accessory Kit	N/A	16¾ x 5 x 17½	14	N/A

ELEMENTS GAS TIMER

FEATURES & BENEFITS

- 1 Hour Timer with Emergency Shutoff

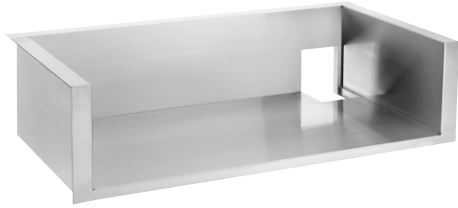


PACKAGE INFO	UNIT DIMENSIONS W X D X H	PACKAGE DIMENSIONS W X D X H	PACKAGE WEIGHT (LBS)	CUTOUT DIMENSIONS W X H X D
70585084 - Gas Timer	4 x 4	-	-	N/A

ELEMENTS GRILL LINER

☑ FEATURES & BENEFITS

- #304 Stainless Steel
- Protects Against Combustible Construction
- Heavy Duty Insulation Jacket
- Protects Against Chassis Corrosion
- Double Lined Construction
- Stainless Steel Mounting Bracket

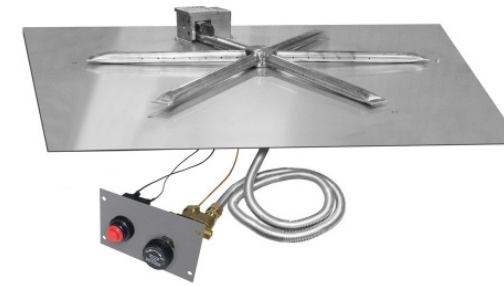


PACKAGE INFO	UNIT DIMENSIONS W X D X H	PACKAGE DIMENSIONS W X D X H	PACKAGE WEIGHT (LBS)	CUTOUT DIMENSIONS W X H X D
70585074 - 32" Grill Liner	34¾ x 22¼ x 9½	36 x 25 x 12	40	33 x 9¾ x 22
70585081 - 40" Grill Liner	42 x 22¼ x 9½	44 x 25 x 12	48	40¾ x 9¾ x 22

ELEMENTS SQUARE GAS FIRE PIT BURNER KIT

☑ FEATURES & BENEFITS

- Available in 25" or 30" Square Flat Stainless Steel Pan
- Stainless Steel 22" Burning Spur
- TPSI Pilot Ignition, for Natural Gas – 125,000 BTU
- Flexframe Constructed of 16-Gauge #304 Stainless Steel
- Four Stainless Steel Vents
- 30 lb. Bag of 1 to 2" Black Lava Rock



PRODUCT INFO	PACKAGE DIMENSIONS W X D X H	PACKAGE WEIGHT (LBS)	KIT INCLUDES:
70585062 - Square Gas Fire Pit Burner Kit	27 x 27 x 5 <i>(Lava Rock & Flexframe packaged separately)</i>	35	Burner System, Control Panel, Flexframe, Vents, Lava Rock, & LP Conversion kit
70580607 - 30" Square Gas Fire Pit Burner Kit w/o flexframe	32 x 32 x 5 <i>(Lava Rock packaged separately)</i>	25	Burner System, Control Panel, Vents, Lava Rock, & LP Conversion Kit
70580606 - 30" Square Gas Fire Pit Burner Kit w/flexframe	38 x 38 x 6 <i>(Lava Rock & Flexframe packaged separately)</i>	35	Burner System, Control Panel, FlexFrame, Vents, Lava Rock, & LP Conversion Kit

ELEMENTS OVEN ISLAND FLANGE KIT

☑ FEATURES & BENEFITS

- Allows the Outdoor Oven to be Built into an Island More Seamlessly
- Made of 14-Gauge, #304 Stainless Steel



PACKAGE INFO	UNIT DIMENSIONS W X D X H	PACKAGE DIMENSIONS W X D X H	PACKAGE WEIGHT (LBS)	CUTOUT DIMENSIONS W X H X D
70585092 - Oven Island Flange Kit	N/A	23 x 6¼ x 2¼	4	N/A

ELEMENTS ROUND GAS FIRE PIT BURNER KIT

☑ FEATURES & BENEFITS

- 34" Round Stainless Steel Disc
- Stainless Steel 22" Burning Spur
- TPSI Pilot Ignition, for Natural Gas – 125,000 BTU
- Flexframe Constructed of 16-Gauge #304 Stainless Steel
- Four Stainless Steel Vents
- 40 lb. Bag of 1 to 2" Black Lava Rock



PRODUCT INFO	PACKAGE DIMENSIONS W X D X H	PACKAGE WEIGHT (LBS)	KIT INCLUDES:
70585063 - Round Gas Fire Pit Burner Kit	36 x 36 x 5 <i>(Lava Rock & Flexframe packaged separately)</i>	40	Burner System, Control Panel, Flexframe, Vents, Lava Rock, & LP Conversion kit

ELEMENTS ISLAND VENT

☑ FEATURES & BENEFITS

- #304 Stainless Steel
- Mounts Horizontally or Vertically

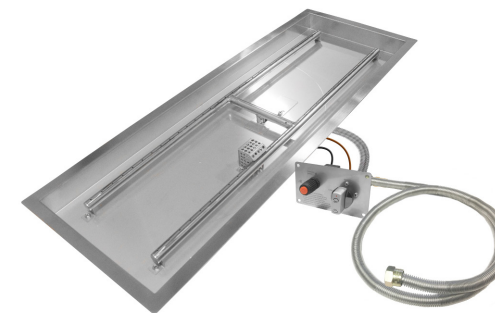


PACKAGE INFO	UNIT DIMENSIONS W X D X H	PACKAGE DIMENSIONS W X D X H	PACKAGE WEIGHT (LBS)	CUTOUT DIMENSIONS W X H X D
70585071 - Island Vent	14 x 5	14 x 4½ x 1	1	-

ELEMENTS LINEAR GAS FIRE PIT BURNER KIT

☑ FEATURES & BENEFITS

- Stainless Steel "H" Burner: 48" x 14"
- TPSI Pilot Ignition, for Natural Gas – 125,000 BTU
- Liquid Propane (LP) Conversion Kit - Converts fire pit from Natural Gas to LP Gas. Includes: Burner and Pilot Orifice and instructions
- 40 lb. Bag of 1 to 2" Black Lava Rock
- Liquid Propane Quick Disconnect Kit
- Liquid Propane Regulator
- 4 Stainless Steel Vents

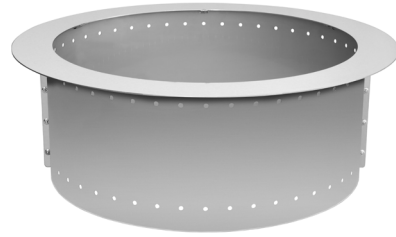


PRODUCT INFO	PACKAGE DIMENSIONS W X D X H	PACKAGE WEIGHT (LBS)	KIT INCLUDES:
70585050 - Linear Gas Fire Pit Burner Kit	52 x 18 x 5 <i>(Lava Rock packaged separately)</i>	36	Burner System, Control Panel, Flexframe, Vents, Lava Rock, & LP Conversion Kit

ELEMENTS SMOKE-LESS FIRE PIT INSERT

☑ FEATURES & BENEFITS

- Made out of 100% Commercial Grade Stainless Steel
- Specially Designed to Burn More Efficiently and Emit Less Smoke
- Can Retrofit Existing Wood Burning Fire Pit
- Kit includes Stainless Steel Insert & Hardware



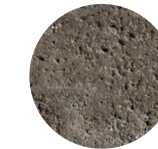
PRODUCT INFO	PACKAGE DIMENSIONS W X D X H	PACKAGE WEIGHT (LBS)	KIT INCLUDES:
70580596 - Smoke-Less Fire Pit Insert	Outer Rim: 34" Inner Rim: 26" Height: 12" Base Outer Diameter: 29" Fits 29½" – 32" internal diameter	21	Stainless Steel insert & Hardware



ARTISAN CAST STONE RECTANGLE FIRE PIT

☑ FEATURES & BENEFITS

- Made of Glass Fiber Reinforced Concrete (GFRC), providing industry leading PSI strength
- Natural pigments are used to ensure an enduring finish with color permeating throughout the cast stone
- Manual Burner is designed to provide 80,000 to 120,000 BTU/HR
- Penetrating sealer offers protection from the elements and enhances the richness of color
- Each fire pit is meticulously hand polished for a smooth and seamless finish



Earthcast



Carrara

PRODUCT INFO

PRODUCT INFO	PRODUCT DIMENSIONS W X L X H	KIT WEIGHT (LBS)	KIT INCLUDES:
12050292 - Rectangle Fire Pit Natural Gas - Earthcast	36 x 62 x 18	505	Cast stone pit, manual burner, & lava stone
12050293 - Rectangle Fire Pit Propane - Earthcast	36 x 62 x 18	505	Cast stone pit, manual burner, & lava stone
12050294 - Rectangle Fire Pit Natural Gas - Carrara	36 x 62 x 18	505	Cast stone pit, manual burner, & lava stone
12050295 - Rectangle Fire Pit Propane - Carrara	36 x 62 x 18	505	Cast stone pit, manual burner, & lava stone

ARTISAN CAST STONE ROUND BOWL

☑ FEATURES & BENEFITS

- Made of Glass Fiber Reinforced Concrete (GFRC), providing industry leading PSI strength
- Integrated feet provide for improved ventilation and easy installation
- Convenient 4" center hole allows access to gas lines
- Natural pigments are used to ensure an enduring finish with color permeating throughout the cast stone
- Manual Burner is designed to provide 60,000 to 80,000 BTU/HR
- Penetrating sealer offers protection from the elements and enhances the richness of color
- Each fire pit is meticulously hand polished for a smooth and seamless finish



Earthcast

PRODUCT INFO

PRODUCT INFO	PRODUCT DIMENSIONS	KIT WEIGHT (LBS)	KIT INCLUDES:
12050284 - Round Natural Gas - Earthcast	33 x 10 x 12 (Outer Diameter x Height x Base)	320	Bowl, manual burner, support plate, lava stone, & regulator for propane
12050285 - Round Propane - Earthcast	33 x 10 x 12 (Outer Diameter x Height x Base)	320	Bowl, manual burner, support plate, lava stone, & regulator for propane
12050253 - Round Planter Bowl - Earthcast	33 x 10 x 12 (Outer Diameter x Height x Base)	320	Bowl & sealer

ARTISAN CAST STONE SQUARE BOWL

FEATURES & BENEFITS

- Made of Glass Fiber Reinforced Concrete (GFRC), providing industry leading PSI strength
- Integrated feet provide for improved ventilation and easy installation
- Convenient 4" center hole allows access to gas lines
- Natural pigments are used to ensure an enduring finish with color permeating throughout the cast stone
- Manual Burner is designed to provide 60,000 to 80,000 BTU/HR
- Penetrating sealer offers protection from the elements and enhances the richness of color
- Each fire pit is meticulously hand polished for a smooth and seamless finish



Earthcast



Carrara



Slate

PRODUCT INFO

PRODUCT INFO	PRODUCT DIMENSIONS	KIT WEIGHT (LBS)	KIT INCLUDES:
12050286 - Square Natural Gas - Earthcast	33 x 10 x 12 <i>(Outer Diameter x Height x Base)</i>	320	Bowl, manual burner, support plate, lava stone, & regulator for propane
12050287 - Square Propane - Earthcast	33 x 10 x 12 <i>(Outer Diameter x Height x Base)</i>	320	Bowl, manual burner, support plate, lava stone, & regulator for propane
12050288 - Square Natural Gas - Carrara	33 x 10 x 12 <i>(Outer Diameter x Height x Base)</i>	320	Bowl, manual burner, support plate, lava stone, & regulator for propane
12050289 - Square Propane - Carrara	33 x 10 x 12 <i>(Outer Diameter x Height x Base)</i>	320	Bowl, manual burner, support plate, lava stone, & regulator for propane
12050290 - Square Natural Gas - Slate	33 x 10 x 12 <i>(Outer Diameter x Height x Base)</i>	320	Bowl, manual burner, support plate, lava stone, & regulator for propane
12050291 - Square Propane - Slate	33 x 10 x 12 <i>(Outer Diameter x Height x Base)</i>	320	Bowl, manual burner, support plate, lava stone, & regulator for propane
12051024 - Square Planter Bowl - Earthcast	33 x 10 x 12 <i>(Outer Diameter x Height x Base)</i>	320	Bowl & sealer
12051957 - Square Planter Bowl - Slate	33 x 10 x 12 <i>(Outer Diameter x Height x Base)</i>	320	Bowl & sealer
12051958 - Square Planter Bowl - Carrara	33 x 10 x 12 <i>(Outer Diameter x Height x Base)</i>	320	Bowl & sealer



BOARDWALK

FEATURES & BENEFITS

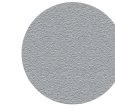
- Made of glass-filled polypropylene, a UV-stable material which prevents any scratches
- Low thermal expansion and contraction
- Includes a 1.5 in. border which delivers a picture frame look and can be installed either horizontally or vertically
- Heavy-duty 0.3 in. thickness
- Easy to install using color matching fastener kits for a seamless finish (sold separately)



Black



White



Gray



Saddle

PRODUCT INFO

PRODUCT INFO	PRODUCT DIMENSIONS
205500081 - Boardwalk - White	2' x 4' x 0.3"
205500080 - Boardwalk - Gray	2' x 4' x 0.3"
205500079 - Boardwalk - Black	2' x 4' x 0.3"
205500098 - Boardwalk - White	3' x 6' x 0.3"
205500096 - Boardwalk - Gray	3' x 6' x 0.3"
205500095 - Boardwalk - Black	3' x 6' x 0.3"
205500097 - Boardwalk - Saddle	3' x 6' x 0.3"



MORSE

FEATURES & BENEFITS

- Made of glass-filled polypropylene, a UV-stable material which prevents any scratches
- Low thermal expansion and contraction
- Includes a 1.5 in. border which delivers a picture frame look and can be installed either horizontally or vertically
- Heavy-duty 0.3 in. thickness
- Easy to install using color matching fastener kits for a seamless finish (sold separately)



Black



White



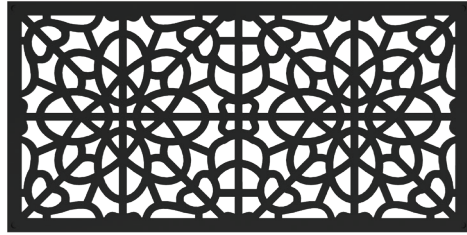
Gray

PRODUCT INFO

PRODUCT INFO	PRODUCT DIMENSIONS
205500087 - Morse - White	2' x 4' x 0.3"
205500086 - Morse - Gray	2' x 4' x 0.3"
205500085 - Morse - Black	2' x 4' x 0.3"

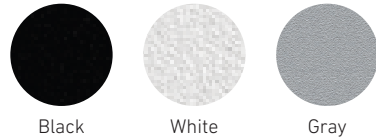


FRETWORK



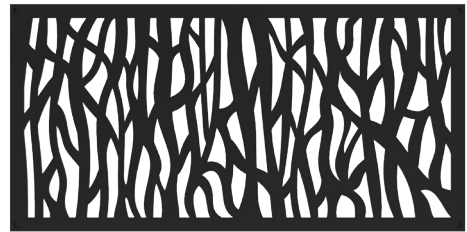
FEATURES & BENEFITS

- Made of glass-filled polypropylene, a UV-stable material which prevents any scratches
- Low thermal expansion and contraction
- Includes a 1.5 in. border which delivers a picture frame look and can be installed either horizontally or vertically
- Heavy-duty 0.3 in. thickness
- Easy to install using color matching fastener kits for a seamless finish (sold separately)



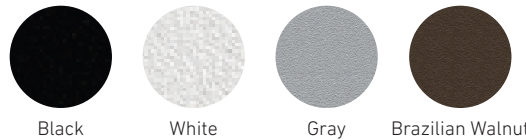
PRODUCT INFO	PRODUCT DIMENSIONS
205500084 - Fretwork - White	2' x 4' x 0.3"
205500083 - Fretwork - Gray	2' x 4' x 0.3"
205500082 - Fretwork - Black	2' x 4' x 0.3"

SPRIG



FEATURES & BENEFITS

- Made of glass-filled polypropylene, a UV-stable material which prevents any scratches
- Low thermal expansion and contraction
- Includes a 1.5 in. border which delivers a picture frame look and can be installed either horizontally or vertically
- Heavy-duty 0.3 in. thickness
- Easy to install using color matching fastener kits for a seamless finish (sold separately)



PRODUCT INFO	PRODUCT DIMENSIONS
205500094 - Spring - White	2' x 4' x 0.3"
205500093 - Spring - Gray	2' x 4' x 0.3"
205500092 - Spring - Brazilian Walnut	2' x 4' x 0.3"
205500091 - Spring - Black	2' x 4' x 0.3"

SANIBEL



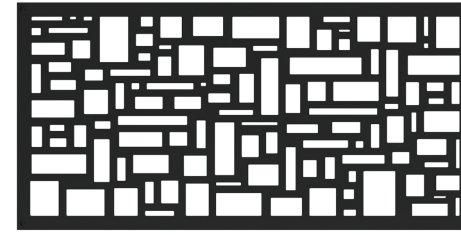
FEATURES & BENEFITS

- Made of glass-filled polypropylene, a UV-stable material which prevents any scratches
- Low thermal expansion and contraction
- Includes a 1.5 in. border which delivers a picture frame look and can be installed either horizontally or vertically
- Heavy-duty 0.3 in. thickness
- Easy to install using color matching fastener kits for a seamless finish (sold separately)



PRODUCT INFO	PRODUCT DIMENSIONS
205500089 - Sanibel - Umber	2' x 4' x 0.3"
205500088 - Sanibel - Black	2' x 4' x 0.3"
205500103 - Sanibel - Black	3' x 6' x 0.3"

SLATE



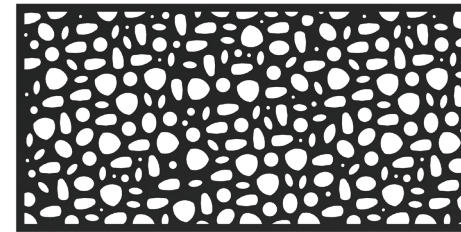
FEATURES & BENEFITS

- Made of glass-filled polypropylene, a UV-stable material which prevents any scratches
- Low thermal expansion and contraction
- Includes a 1.5 in. border which delivers a picture frame look and can be installed either horizontally or vertically
- Heavy-duty 0.3 in. thickness
- Easy to install using color matching fastener kits for a seamless finish (sold separately)



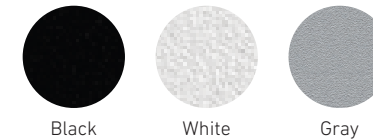
PRODUCT INFO	PRODUCT DIMENSIONS
205500090 - Slate - Black	2' x 4' x 0.3"

RIVER ROCK



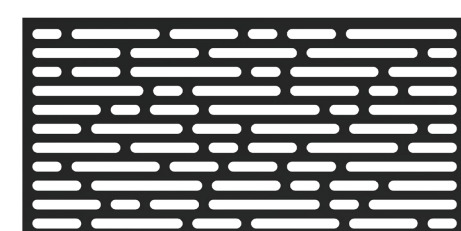
FEATURES & BENEFITS

- Made of glass-filled polypropylene, a UV-stable material which prevents any scratches
- Low thermal expansion and contraction
- Includes a 1.5 in. border which delivers a picture frame look and can be installed either horizontally or vertically
- Heavy-duty 0.3 in. thickness
- Natural design ideal for any application



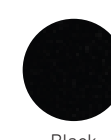
PRODUCT INFO	PRODUCT DIMENSIONS
205500102 - River Rock - White	3' x 6' x 0.3"
205500101 - River Rock - Gray	3' x 6' x 0.3"
205500100 - River Rock - Black	3' x 6' x 0.3"

OPTIC



FEATURES & BENEFITS

- Made of glass-filled polypropylene, a UV-stable material which prevents any scratches
- Low thermal expansion and contraction
- Includes a 1.5 in. border which delivers a picture frame look and can be installed either horizontally or vertically
- Heavy-duty 0.3 in. thickness
- Simple, classic design ideal for any application

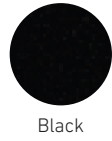
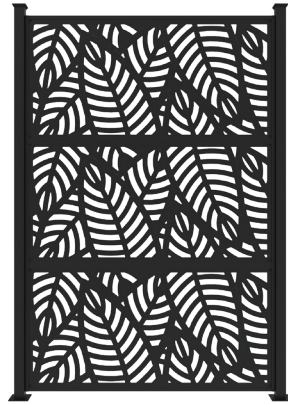


PRODUCT INFO	PRODUCT DIMENSIONS
205500099 - Optic - Black	3' x 6' x 0.3"

DECORATIVE SCREEN PANEL FRAME KIT

✔ FEATURES & BENEFITS

- Ready-to-assemble frame kit to create unique privacy/decorative wall
- 2 ft. x 4 ft. frame holds three decorative screen panels & 3 ft. x 6 ft. frame holds two decorative screen panels (vertical holds one 3 ft. x 6ft. panel)
- Allows for additional frame kits to be connected for unlimited customization
- Matte black finish provides a clean and modern look
- For indoor or outdoor use



📦 PRODUCT INFO

PRODUCT INFO	PRODUCT DIMENSIONS
204000066 - 2FT X 4FT Frame Kit - Black	4' W x 6' Tall
204000063 - 3FT X 6FT Frame Kit - Black	6' W x 6' Tall
204000065 - 3FT X 6FT Frame Kit (Vertical) - Black	6' W x 6' Tall

PERGOLA (WITH OPTIONAL SIDE WALL)

✔ FEATURES & BENEFITS

- Easy to assemble and install
- Modern twist on traditional wood pergolas, perfect for smaller spaces
- Customize by adding decorative screen panels (sold separately) as a roof or side walls to provide shade and/or privacy
- Durable premium powder coat requires minimal maintenance
- Modern matte black finish



📦 PRODUCT INFO

PRODUCT INFO	PRODUCT DIMENSIONS
204000067 - Pergola Side Wall- Black	8' W x 4' H
205500104 - Pergola - Black	8' W x 8' H

LINE & CORNER POSTS

✔ FEATURES & BENEFITS

- Connect to full frame kit to create a corner privacy wall
- Must be used with complete decorative panel frame kit for proper installation
- Add as many kits as needed for unlimited customization
- Matte black finish provides a clean and modern look
- For indoor or outdoor use



📦 PRODUCT INFO

PRODUCT INFO	PRODUCT DIMENSIONS
204000061 - 2FT X 4FT Decorative Screen Panel Line Post Ext Kit - Black	2" W x 2" D x 6' H
204000060 - 2FT X 4FT Decorative Screen Panel Corner Post Ext Kit - Black	2" W x 2" D x 6' H
204000064 - 3FT X 6FT Decorative Screen Panel Line Post Ext Kit - Black	2" W x 2" D x 6' H
204000062 - 3FT X 6FT Decorative Screen Panel Corner Post Ext Kit - Black	2" W x 2" D x 6' H



BRING YOUR OUTDOOR VISION TO LIFE WITH BELGARD

Belgard® has been North America's number one brand of pavers and landscape wall products for over 25 years. The only nationwide provider of hardscape products, we have established ourselves as an industry leader and dedicated partner to homeowners and industry professionals alike. With over 20,000 hours each year dedicated to research and development, we are renowned for paving the way with expertise and innovations that guide industry trends. Backed by a national infrastructure of more than 150 operating locations, every town is our town.

Our network of Preferred Partners and Belgard Authorized Contractors are trained to supply superior craftsmanship, and our products set the standard for quality. We proudly stand behind our products with a lifetime transferable limited warranty, giving you the peace of mind to know that your outdoor space will retain its beauty for years to come.

Visit [Belgard.com](https://www.belgard.com) for inspiration, financing options, authorized contractors, warranty information and more!

